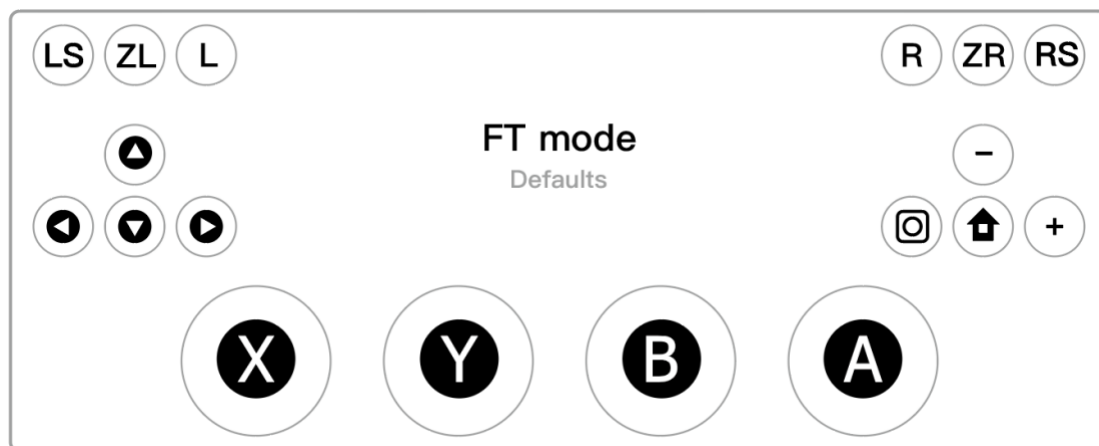


# DIVALLER Upgrade Tutorial

2020/02/21

## Upgrade content







- Solve the issue that PlayStation4 frequently disconnects.
- Under Nintendo Switch, **LeftStick\_Butto (LS)** and **RightStick\_Button (RS)** functions are added, similar to L3 and R3 of PS4.



## Upgrade tutorial :

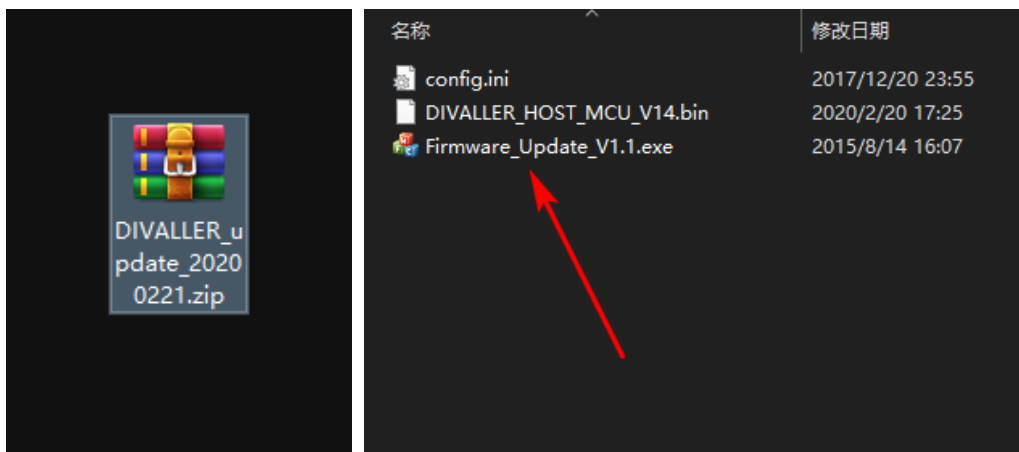
1. Disconnect the **USB TYPE-B** from DIVALLER and keep the other end of **USB TYPE-B** connected to the PC.



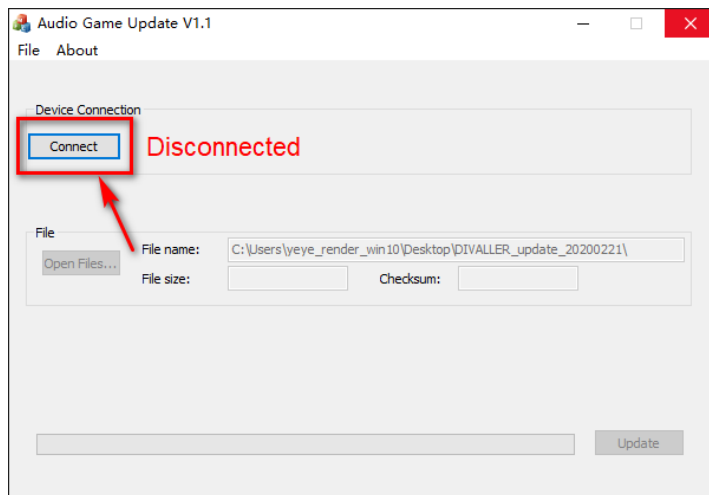
2. Press    at the same time, without letting go, insert the **USB TYPE-B** connector of DIVALLER, and then release   .



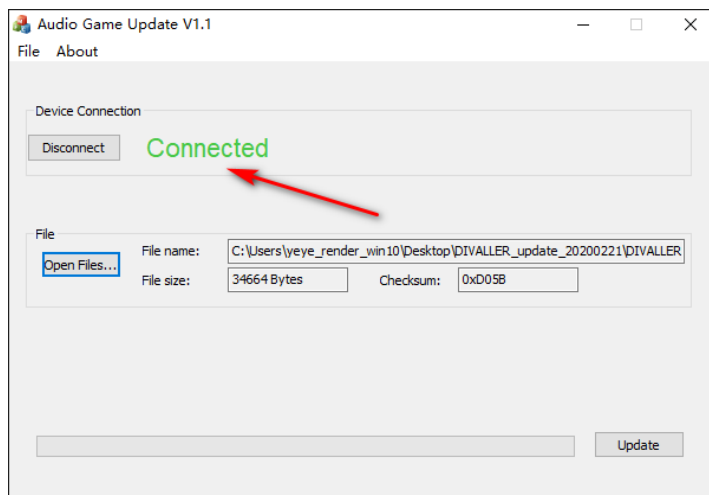
3. Open the compressed package and run the software **Firmware\_Update\_V1.1.exe**.



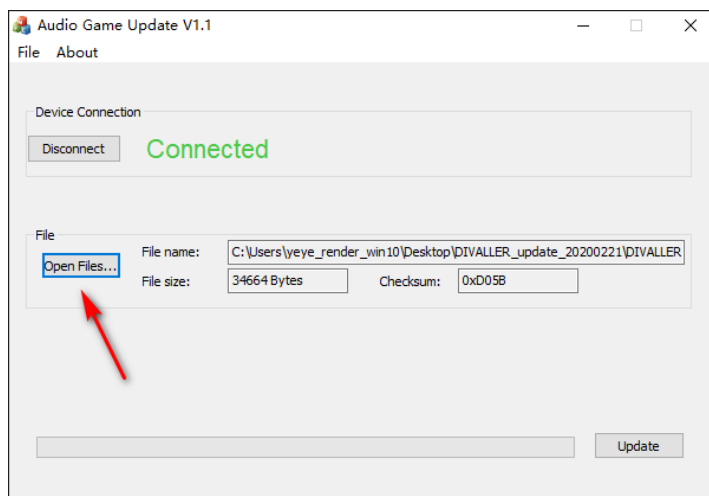
4. Click the **Connect** button.



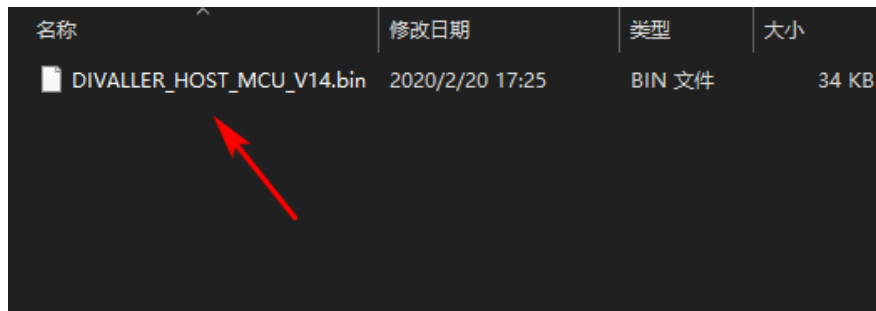
5. Red **Disconnect** turns Green **Connected** .(If the connection is unsuccessful, see the solution at the end of the tutorial)



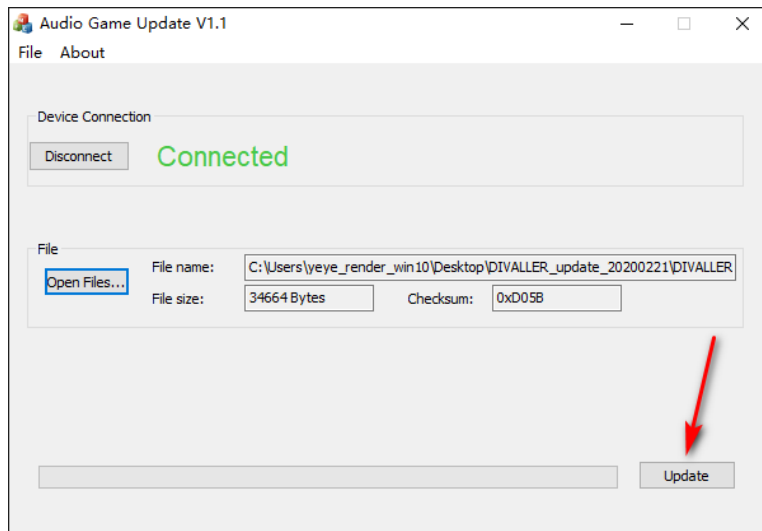
6. Click the **Open Files...** button.



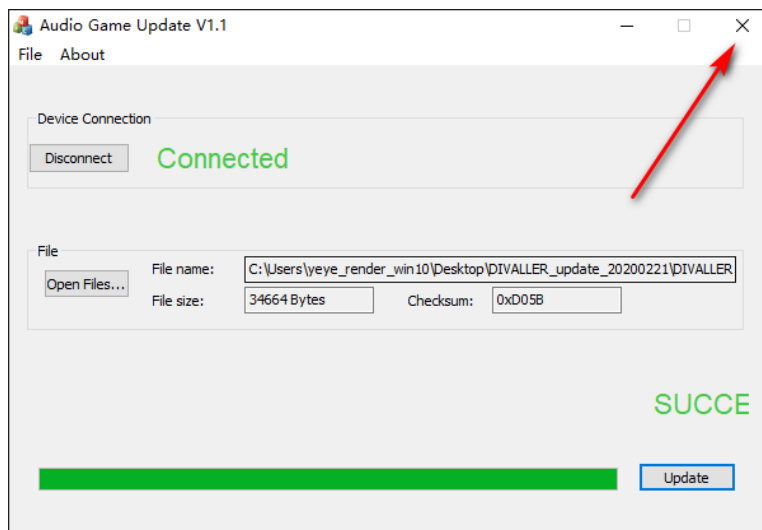
7. Select the firmware file **DIVALLER\_HOST\_MCU\_V14.bin**.



8. Click the **Update** button.



9. After the progress bar completes, close **Firmware\_Update\_V1.1.exe**.




10. Replug the **USB TYPE-B** connector of DIVALLER.



11. Complete.

## Solution for unsuccessful connection

- ☐ Disconnect the **USB TYPE-B** connector of DIVALLER.
- ☐ Press  at the same time, without letting go, insert the **USB TYPE-B** connector to DIVALLER again.
- ☐ Click the Software **Connect** button.

If still unsuccessful, please contact us by email. ([sales@gamo2.com](mailto:sales@gamo2.com))